

MERCY HYFLEX LEARNING PLAN

Mercy's path to returning to school in September is guided by two principles: the continuity of our academic mission and protecting the health and safety of our community of students, faculty, and staff. We developed a hybrid model with two student cohorts attending in-person two days in a row and learning online two days in a row. Half our students will be attending in-person instruction, while the other half will be participating online with video conferencing technology or pursuing class work in a mode designed by the teacher. The **Faith** cohort will attend in-person on Mondays and Tuesdays, while the **Hope** cohort will attend on Thursdays and Fridays. Both cohorts will be attending class according to the daily schedule, whether their desk is at school or at home. Wednesdays will be devoted to building Mercy culture.

FEATURES

2 STUDENT COHORTS

4 DAY SCHOOL WEEK

8 DAY CYCLE

4 WEEK PERIOD

BENEFITS

- Offers the consistency of completing our eight-day cycle in a two-week period
- Reverse cycle every two weeks permits every student to experience every class in-person
- Families can rely on a regular pattern of attendance with sisters in same cohorts
- Allows for weekly deep cleaning and culture-building on Wednesdays
- Online learning will continue to be largely synchronous, in keeping with our exceptional spring program
- Allows for a reduction in screen time for both students and faculty, and provides the additional time needed for the increased demands online teaching and learning present
- Allows for a smooth transition to total online learning if necessary

KEY POINTS



SCHOOL DAY
 7:45 a.m. Homeroom
 8 a.m. First Period
 3 p.m. Dismissal

Classes begin on the hour or half hour



SCHOOL YEAR

- First Day: September 8
- Extended Thanksgiving Break
- Last Day: June 16

Attendance Schedule for In-Person Learning

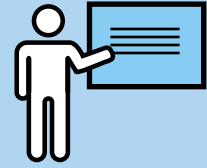
WEEKS 1 and 2 — Regular Cycle

Day	MON	TUES	WED	THURS	FRI	MON	TUES	WED	THURS	FRI
Cohort	FAITH	FAITH		HOPE	HOPE	FAITH	FAITH		HOPE	HOPE
Cycle	A	B		C	D	E	F		G	H

WEEKS 3 and 4 — Reverse Cycle

Day	MON	TUES	WED	THURS	FRI	MON	TUES	WED	THURS	FRI
Cohort	FAITH	FAITH		HOPE	HOPE	FAITH	FAITH		HOPE	HOPE
Cycle	H	G		F	E	D	C		B	A

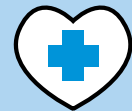
NYS MANDATED RULES FOR REOPENING



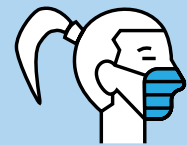
Provide teacher/student interactions daily



Maintain appropriate social distancing



Establish a process for health screenings



Require face coverings for staff and students



Clean and disinfect school regularly



Promote hand hygiene and respiratory etiquette